

Web Map Overview





We have improved the viewer to allow for easier navigation and greater functionality.

The most significant improvement is the map viewer is no longer platform dependant. This means the map viewer runs on any hardware, computer operating system and browser. Windows and Mac users can now use the same viewer. Keep in mind that we have tested Web Map with the popular internet browsers used today, but access to Web Map may be affected as browsers are updated and modified over time.


We have also modified the viewer's navigation tools. A new Google like Zooming and Navigation tool has been added. The goal is to improve the end users experience by using familiar tools.

Please read on to familiarize yourself with all the changes we have made to Web Map, e.g.: a link to Street View, and then launch the new Web Map and give it a try!

Zooming & Navigation

- Zooming can be accomplished a number of ways from the tools located on the toolbar on the top of the map.
 -  **Modified** → The zoom in command can be used two ways. By clicking once, it will zoom you in on the map one level with the center point being where ever you click. By holding the left click button it allows you to define a zoom box for the map to zoom into.
 -  The zoom out command will zoom you out on the map one level with the center point being where ever you click.
 - **Now** →  The zoom levels command will allow you to choose a specified scale to zoom into. The center point will be the current center point of the map.
 -  The zoom previous command will keep the last location you were at, and when activated will zoom you back to that location.




- **New →** The navigation command set on the upper right hand corner of the map allows you to zoom in or out using the slider bar. It also allows you to pan by clicking the pan button in the middle. You can also pan the map by clicking the north/south/east/west pan arrows.
- **New →** In addition to the tools on the toolbar, you can zoom in and out using the wheel on your mouse. This will zoom the map in and out with the center point being where ever the mouse pointer is located. You can also pan by holding down the left click on the mouse and dragging the map.
-  The fit map command will fit the map to the designated start point, being the city extent.

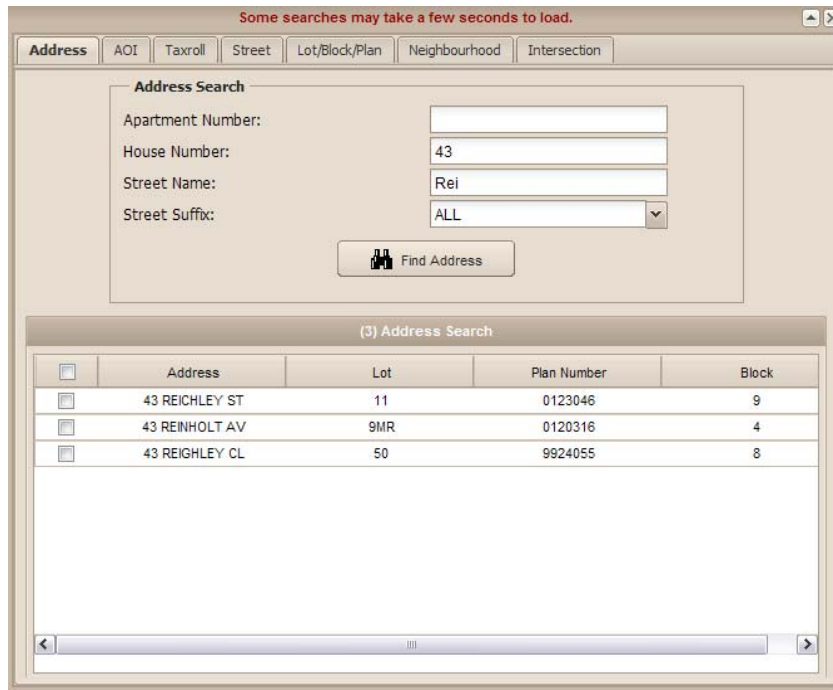


- **Modified →** The overview map shows where you are currently located in the city by drawing a red box around the area. You can drag this box within the overview map to relocate the map.



This window is also a free floating control so it can be moved anywhere in the browser window by left clicking the top of the window and dragging it.

- **Searching, Select Sets & Google Street View**

- Searching hasn't changed much from the previous version.
-  Clicking on the search command will open the search window, displaying the available searches for the theme you are on.




- **Modified** → The search window looks different, but acts similar to the old version. Click on the tab for the search you want. Fill in the appropriate information and click the find button. The results will show at the bottom. If there is more than one result you will need to click the check box to zoom into that item. If there is only one result found the map will check the box and zoom in automatically.

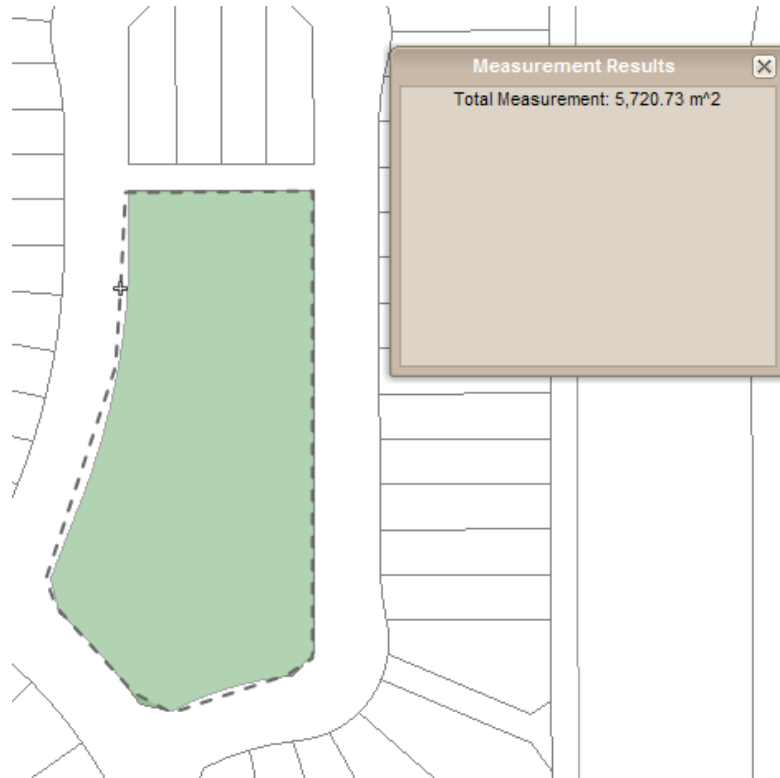
-  The fit select set command will fit multiple search items in the map. For instance in the above example if you select both REIGHLEY CL 43 and REINHOLT AV 43, the map would fit both parcels in the map.
-  The select set properties command will open a window showing the data for the selected items. This data can be downloaded into Microsoft Excel from this window.

- **Google Street View** is now available from Web Map. To use this feature simply click on the Street View link in the tool tip for a property. This will open Google Street View loaded to that address.



- **Modified → Measurement Tools**

-  The measurement command will give you a list of three tools to pick from.
 - **Measure Area** – selecting this command will allow you to define an area by creating a polygon using point. Left click once to set a new point, double click to end the area.



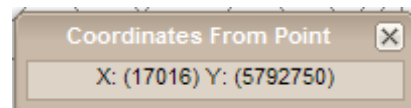
The measurement results window will show you the total area in meters squared.

- **Measure Distance** – selecting this command will allow you to measure a distance. Left click once to set a point, and double click to end the measurement.




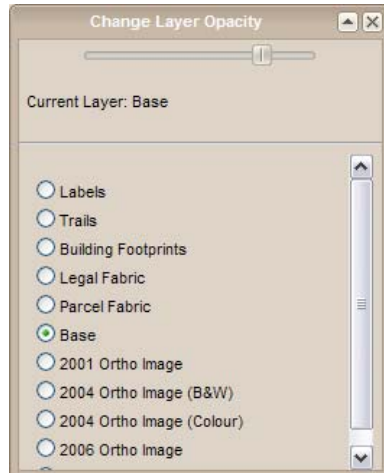
The measurement results window will show you the measurement of each segment you defined in meters, as well as the total meters for all the segments.

- **Coordinates From Point** – selecting this command will give you the x,y coordinates from a point. To get the coordinates left click on a point in the map. A popup window will display the coordinates.



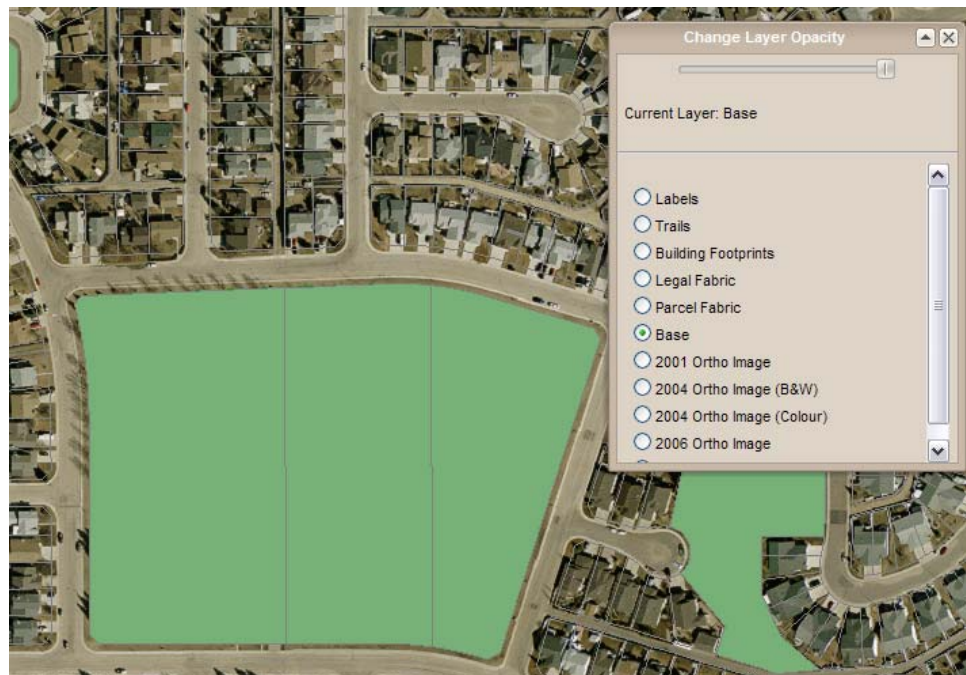
- **New** → Layer Opacity

-  This command allows you to make levels see through.

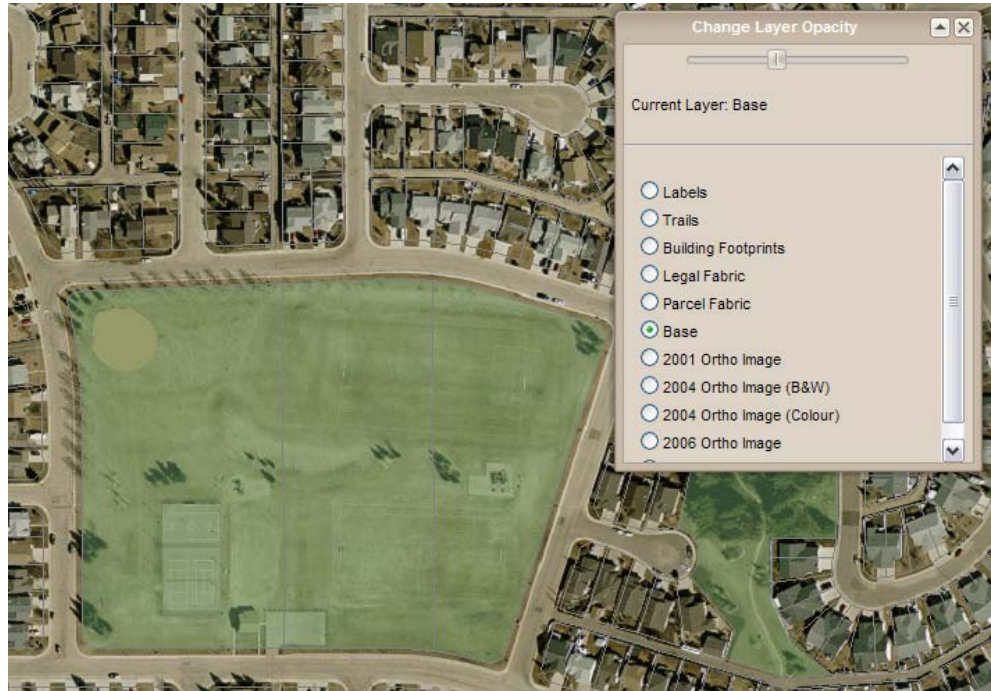


Select the layer you want to modify and then move the slider bar to the left to make it more see through.

In the example below you can see the park has the ortho image below it, but you can't see the ortho through the park.



But after moving the slider about half way across, you can see the ortho through the park.



The GIS is always looking to improve – Please direct any questions or comments to GISFeedback@reddeer.ca.